



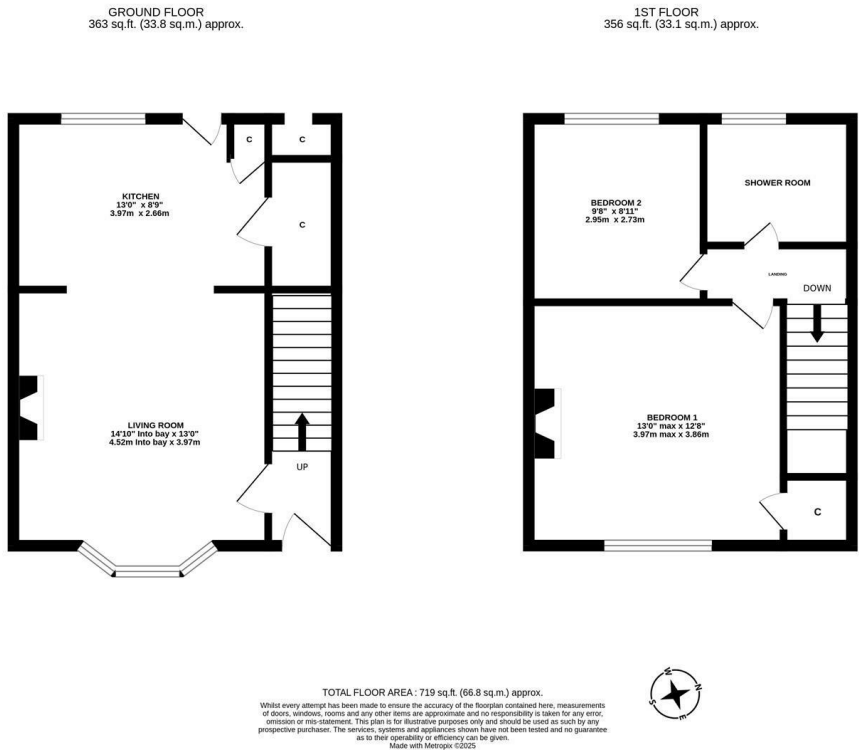


Well presented with period features and a west backing rear garden. This two bedroom mid-terrace is ideally located on Hedley Terrace, Gosforth. Situated a stones-throw from Regent Centre Metro Station and a short walk to the shops, cafés and restaurants of Gosforth High Street, Hedley Terrace is the perfect location for a variety of buyers.

The accommodation briefly comprises: entrance hall with stairs to first floor; living room with walk in bay, feature fireplace and stripped wood flooring, open to kitchen with fitted units, work surfaces, under-stairs storage cupboard, additional storage cupboard, tiled flooring and rear door access to the garden. The first floor landing gives access to; two double bedrooms, bedroom one with stripped wood flooring and feature fireplace; shower room complete with three piece suite.

Externally, a front town garden with dwarf wall boundary and to the rear, an enclosed west facing garden laid mainly to lawn with a mixture of mature planting, a patio seating area, store room and fenced boundaries.

Well Presented Two Bedroom Mid-Terrace | 719 Sq ft (66.8m2) | Living Room to Kitchen | Shower Room | Store | Front Town Garden | Enclosed West Facing Rear Garden | Period Features | Great Location | Freehold | Council Tax Band B | EPC: D



Offers Over £245,000

**IMPORTANT NOTE:** These particulars and the descriptions and measurements herein do not constitute representation and whilst every effort has been made to ensure accuracy, this cannot be guaranteed.

